

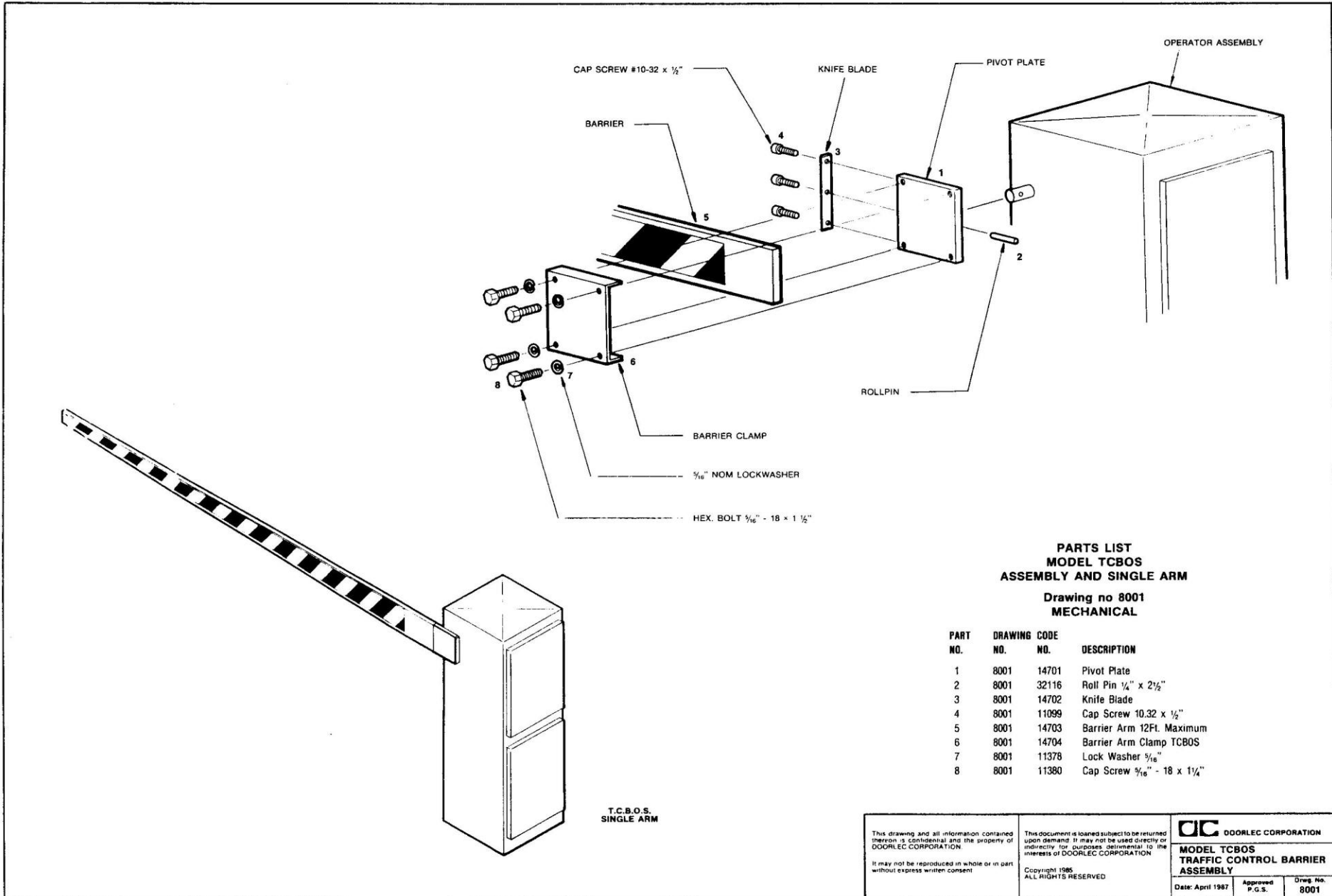
# Technical Information

TCBOS

---



235 AVE LABROSSE, POINTE-CLAIRE,  
MONTREAL, (QUEBEC) CANADA, H9R 1A3  
TEL.: (514) 695-0772 - 800-667-0772  
FAX: (514) 695-0248 - 800-667-0248  
[www.doorlec.com](http://www.doorlec.com)





Maximum length of single arm barrier 12 ft. (3.66 m)

MODEL	H.P.	VOLTAGE- PHASE	CONTROL CIRCUIT
TCBOS-311	$\frac{1}{3}$	115-1	24V.A.C.
TCBOS-321	$\frac{1}{3}$	230-1	24V.A.C.

## IMPORTANT NOTICE

Electrical wiring shown are for all our electric door, gate, traffic control barrier operators built with the Logic Controller DC2000 since 1994.

For electric operator prior of 1994 please fax or email the serial number and model of operator, we will fax you the appropriate electrical drawing for that unit for per usual.

You will find the serial number on the control cabinet cover sticker. The first two digits represent the year of fabrication and the 4 or 5 next digits are the serial number.

**40a**  
(115v.)

**41a**  
(230v.)

**42a**  
(208v./460v./575v.)